

Education, Children and Families Committee

10am, Tuesday, 9 October 2018

West and South West Schools Review – Approval to Progress Statutory Consultations

Item number	7.9
Report number	
Executive/routine	
Wards	
Council Commitments	

Executive Summary

On 21 June 2018 the Education, Children and Families Committee considered four options following extensive informal consultation on future school infrastructure in the west and south west of Edinburgh. The Committee agreed Option 1 should be taken forward to statutory consultation.

This report outlines the proposed catchment changes to affected schools in the South West of the city and recommends the Committee approves a full statutory consultation be progressed based on the draft consultation paper attached in Appendix 1.

This report also highlights immediate accommodation issues at Kirkliston Primary School which may be addressed by creating an early stages campus on the Kirkliston Leisure Centre site. This paper seeks delegated authority to undertake a statutory consultation on this proposal.

West and South West Schools Review – Approval to Progress Statutory Consultations

1. Recommendations

- 1.1 The Education, Children and Families Committee is asked to:
- 1.1.1 Approve a full statutory consultation, beginning 23 October 2018, proposing the realignment of the catchment boundaries of Currie Primary School, Dean Park Primary School and Nether Currie Primary School and consequential changes to Currie High School and Balerno High School.
 - 1.1.2 Note the intention to report to Council in March 2019 the outcomes of the statutory consultation.
 - 1.1.3 Approves that delegated authority be given to the Executive Director of Communities and Families to produce a consultation paper and progress a statutory consultation in Kirkliston proposing the relocation of Kirkliston Primary School's P1 classes to a new Early Years campus on the site of Kirkliston Leisure Centre.

2. Background

- 2.1 At a meeting of the Education, Children and Families Committee on 21 June 2018 the "Update on the Informal Consultation in West/South West Schools" report was considered. The report provided further information on four options developed following a period of informal consultation in the West and South West of the city.
- 2.2 The focus of the informal consultation process was an extensive programme of engagement with school communities throughout the west and south west of Edinburgh. The council wished to gather opinions about future change to the school estate in this large area of the city, which will see significant growth in future years, before any statutory consultations for changes to schools or their catchment areas are progressed.
- 2.3 Among the recommendations approved by Committee on 21 June 2018 was an agreement that Option 1 should now progress to statutory consultation.

3. Main report

- 3.1 This report focuses on the catchment changes which are required in south west Edinburgh following the outcomes of the informal consultation and a draft statutory consultation paper is attached in Appendix 1 for consideration. In relation to the

future provision of secondary education in the remaining areas of West Edinburgh, as reported to Committee in June 2018, proposals will be developed alongside the development of the City Plan 2030 and draft statutory consultation papers will be submitted to Committee for consideration when appropriate. The one exception to this relates to primary provision in Kirkliston where due to rising rolls, it is recommended that a statutory consultation is progressed proposing the relocation of Kirkliston Primary School's P1 classes to a new Early Years campus on the site of Kirkliston Leisure Centre

3.2 Full details of the statutory consultation necessary in the South West of the city to implement Option 1 are contained in the draft statutory consultation paper which is attached in Appendix 1. The key elements of the proposals are:

- Reduction of Currie Primary School's catchment area (also affecting Currie High School) to reduce existing and projected pressure on Currie Primary School and avoid the need to further extend the school.
- Extension of Dean Park Primary School's catchment area (also affecting Balerno High School and Currie High School) to incorporate the existing Cherrytrees area, new developments at Newmills and Ravelrig Road and areas around Dalmahoy Road.
- The construction of new classroom accommodation at Dean Park Primary School, beyond that already identified as part of the LDP, to accommodate the projected demand.
- Extension of Nether Currie Primary School's catchment area to incorporate the Kinleith Mill development.
- The proposed catchment changes would affect the P1 and S1 intake for August 2020 and any new registrations from people moving into the area.
- There will be no mandatory transfer of pupils already attending another school.

3.3 The public statutory consultation period will run from 23 October 2018 to 3 December 2018. Two public meetings will be held during the consultation period with details of these in the table below:

Venue	Date	Time
Currie Community High School	TBC	18:30 – 20:30
Balerno High School	TBC	18:30 – 20:30

3.4 All representations received, copies of the minute from the public consultation meeting and any other relevant information will be sent to Education Scotland for their consideration.

- 3.5 An Outcomes of the Consultation report will be prepared for consideration at a full Council meeting in March 2019. The report will provide responses to the issues raised during the statutory consultation, set out Education Scotland's recommendations to the Council and make a final recommendation to be considered by the Council. The Outcomes report will be published on the Council website three weeks in advance of the Council meeting.
- 3.6 While Option 1 approved by Education, Children and Families Committee on 21 June 2018 also suggested minor changes to the catchment of Ratho Primary School, it is proposed that these, along with more significant catchment changes proposed in the North West of the city under Option 1, do not progress at this time. This is to allow time for consideration of sites for secondary school infrastructure to be considered alongside the development of the City Plan 2030.
- 3.7 However, there is an immediate need to address accommodation pressures created by rising rolls at Kirkliston Primary School which cannot be resolved through catchment change. Kirkliston Primary School has already been expanded on its existing site and, following initial discussions with school management and the school's Parent Council it is proposed that new classrooms be built as part of a new Kirkliston Primary School early stages campus on the Kirkliston leisure centre site, approximately 500m from the main school site.
- 3.8 The new campus would be a purpose-built facility incorporating a 128-place nursery for 2-5 year olds and accommodation for 4 P1 classes. The new building would include dining facilities and a large play area and nursery garden and would replace the nursery currently collocated within the community centre on Queensferry Road. Relocating the P1 classes to this new facility would have the benefit of reducing pressure on the school's main site and improving the transition from nursery to primary. It is anticipated that pupils would also benefit from access to the leisure centre's facilities.
- 3.9 If approved it is anticipated that the new facility would open in August 2020. To address accommodation pressures at the school until then, temporary classroom facilities will be provided on the main Kirkliston Primary School site from August 2019.
- 3.10 The relocation of the P1 classes to the new site requires approval following a statutory consultation process. In order to ensure delivery of the new facility for August 2020 it is proposed that Committee approves that delegated authority be given to the Executive Director of Communities and Families to produce a consultation paper and progress a statutory consultation in Kirkliston proposing the relocation of P1 classes to a new early stages campus on the site of Kirkliston Leisure Centre.

4. Measures of success

- 4.1 Schools in the South West of the city that have catchment populations that are in line with development proposals and are appropriate to the capacity of the school.

- 4.2 The delivery of an accommodation solution for Kirkliston Primary School that meets the demands of its catchment population and is designed to a specification that allows all educational requirements to be met.

5. Financial impact

- 5.1 The capital and revenue cost implications of the proposed catchment changes in the South West are set out in the draft statutory consultation paper included in Appendix 1.
- 5.2 There is £1.7m allocated in the Early Years 1140 hours expansion infrastructure strategy against the creation of a new early stages campus for Kirkliston Primary School. The Scottish Government will provide this funding. It is estimated that the additional cost of accommodating P1 classes on this site would be £1m. This deficit requires the identification of additional resources in future capital budgets.

6. Risk, policy, compliance and governance impact

- 6.1 All Communities and Families capital projects are delivered in line with the Council's Risk Management Policy and Framework. Ensuring sufficient accommodation for catchment pupils to secure a place at their catchment school is a key objective for the School Estate Planning Team and there would be a significant reputational risk to the Council if this is not achieved.
- 6.2 The delivery of any education infrastructure project is overseen by an Investment Steering Group which operates on the project management principles of Prince 2 and follows the same governance structure as all other Council projects. The consideration and management of risk would be undertaken through this group.
- 6.3 The procurement of any necessary infrastructure would be in line with Council standing orders and the contractors delivering any accommodation solutions will operate in accordance with all relevant legislative and health and safety requirements and have community engagement policies. The school communities will be kept informed of any issues that arise during the construction process which will mitigate against the risk of criticism of the Council.

7. Equalities impact

- 7.1 There are no negative equality or human rights impacts arising from this report.

8. Sustainability impact

- 8.1 Any new education infrastructure will, as a minimum, meet the latest energy efficiency requirements of the statutory building standards.

9. Consultation and engagement

- 9.1 Any statutory consultation will be carried out in line with the procedures set out in the Schools (Consultation) (Scotland) Act 2010 as amended by the Children and

Young People (Scotland) Act 2014. Engagement with all key stakeholders, including pupils, parents, staff and elected members will be undertaken through the statutory consultation.

- 9.2 Prior to bringing forward the proposals set out in the draft statutory consultation paper attached to this report, extensive informal consultation was carried out with the school communities as part of the Informal Consultation on West/South West Schools.

10. Background reading/external references

- 10.1 Education, Children and Families Committee on 29 March 2018 - report on the Outcomes of the Informal Consultation in West and South West Edinburgh
- 10.2 [Education, Children and Families Committee on 22 May 2018 - Update on the Informal Consultation in West/South](#)
- 10.3 [Education, Children and Families Committee on 21 June 2018 - Update on the Informal Consultation in West/South](#)

Alistair Gaw

Executive Director of Communities and Families

Contact: Robbie Crockatt, Acting School Estate Planning Manager

E-mail: robbie.crockatt@edinburgh.gov.uk | Tel: 0131 469 3051

11. Appendices

- 11.1 Appendix 1 – Draft Statutory Consultation Paper

Proposal to realign the catchment areas of Currie Primary School, Nether Currie Primary School, Dean Park Primary School, Currie High School and Balerno High School.

Affecting: Balerno High School, Currie High School, Currie Primary School, Dean Park Primary School and Nether Currie Primary School.

1 Introduction

- 1.1 This consultation paper sets out the rationale for, and implications of, realigning the catchment area of Currie Primary School, Dean Park Primary School, Nether Currie Primary School, Currie High School and Balerno High School. This paper also sets out the consultation process and the means and timescales for making representations.
- 1.2 The consultation paper is divided into the following sections:
1. Introduction
 2. Background and Context
 3. Proposed Catchment Changes
 4. Rational for Change
 5. Secondary Schools
 6. Educational Benefits
 7. Financial Considerations
 8. Consultation Process

Appendices

- Appendix 1 Existing Primary School Catchment Areas
- Appendix 2 Proposed Primary School Catchment Areas
- Appendix 3 Existing Secondary School Catchment Areas
- Appendix 4 Proposed Secondary School Catchment Areas
- Appendix 5 List of affected addresses
- Appendix 6 Response Questionnaire

- 1.3 Comments on the proposals should be submitted by no later than close of business on Monday 3 December 2018 by email or post to the addresses set out in Section 8.11 of

this paper. A response questionnaire is provided for this purpose which respondents are encouraged to use, details are included in Appendix 6. The questionnaire can also be completed online via the Council website:

[address tbc]

- 1.4 Two public meetings will be held as follows, further details of which are provided in section 8.8:

Venue	Date	Time
Currie High School	tbc	18:30 – 20:30
Balerno High School	tbc	18:30 – 20:30

2 Background and Context

Background Summary

- 2.1 Following a significant period of informal consultation in the West and South West of Edinburgh, the Education, Children and Families Committee agreed on 21 June 2018 that a statutory consultation proposing the realignment of the catchment areas of Currie Primary School, Dean Park Primary School, Nether Currie Primary School, Currie High School and Balerno High School should be undertaken. Full details of the informal consultation can be found on the Council website at: www.edinburgh.gov.uk/schoolsreview
- 2.2 The school roll at Currie Primary School is projected to rise creating accommodation pressure at the school. The rising roll is attributed to growth in Currie Primary School’s catchment population from the existing urban area and forecasted pupil generation from housing developments in the catchment area. Currie Primary School was extended in 2018 and the catchment changes proposed may mitigate the requirement to further extend the school.

School Roll Projections 2017

- 2.3 In December 2017 a report was submitted to the Education, Children and Families Committee providing the latest annual school roll projections for the 2017-2027 period.
- 2.4 The latest projections show growth at Currie Primary School would see its roll increase to a three stream, 21 class school by 2023 and would exceed this beyond 2024. The projections also show that the roll at Dean Park Primary School remains steady while the Nether Currie Primary School roll shows room for growth.

Table 1: South West Primary school rolls, estimated 2018; projected, 2019-2027

Primary School	Existing Capacity	2018	2019	2020	2021	2022	2023	2024	2025	2026	2027
Currie PS	546	470	508	538	572	593	618	633	656	611	669
Dean Park PS	476	455	468	463	455	459	449	449	463	450	456

Nether Currie PS	210	153	163	167	163	168	169	170	171	171	172
------------------	-----	-----	-----	-----	-----	-----	-----	-----	-----	-----	-----

- 2.5 The growth at Currie Primary School is being driven by high births in the catchment area and resultant increases to the P1 intake. The birth rate in Currie Primary School's catchment area has increased from 40 in 2011 to 60 in 2016. Dean Park Primary's catchment birth rate dropped from 46 to 28 over the same period while Nether Currie's has seen no change.
- 2.6 The latest projections show growth at Balerno High School would see its roll exceed its notional capacity by 2021. No accommodation pressures are identified at Currie Community High School until 2027.

Table 2: South West Secondary school rolls, estimated 2018; projected, 2019-2027

Secondary School	Existing Capacity	2018	2019	2020	2021	2022	2023	2024	2025	2026	2027
Balerno HS	850	754	788	836	871	892	912	915	915	915	915
Currie CHS	900	725	740	754	784	822	831	847	863	894	920

Edinburgh Local Development Plan

- 2.7 In November 2016 the Council approved the Edinburgh Local Development Plan. It identified sites at Riccarton Mains Road, Curriehill Road, Newmills Road and Ravelrig Road as suitable for housing development. The supporting Education Infrastructure Appraisal and Action Programme provides a cumulative assessment of the additional education infrastructure required to accommodate pupils from new housing developments. It found three additional classrooms at Currie Primary School and two additional classrooms at Dean Park Primary School are required to support pupil generation from known housing developments in the area.
- 2.8 The Council's Planning department carries out an annual assessment of the supply of housing land in the city and publishes the [Housing Land Audit and Delivery Programme](#) (HLADP) every autumn. It details completions from the previous April to March and estimates expected housing completions from sites with planning permission or identified in the LDP over the coming years.
- 2.9 The most recent HLADP suggests that between now and 2021 a further 47 catchment primary pupils will be generated by housing development in the existing Currie Primary School catchment area. A further 36 pupils will be generated by housing developments in the existing Dean Park catchment area. There are no housing developments in Nether Currie Primary School's catchment area.

3. Proposed Catchment Changes

Summary of Proposals

- 3.1 The proposed catchment changes would see sections of Currie Primary School's catchment area realigned with Nether Currie Primary School. As both of these primary

schools feed to Currie High School there would be no resulting change to secondary school catchment area boundaries.

- 3.2 The proposed catchment changes would also see a section of Currie Primary School's catchment area realigned with Dean Park Primary School. This would necessitate a realignment of the Currie High School and Balerno High School catchment boundaries.
- 3.3 The proposal would geographically link Ratho Primary School with the rest of the Balerno High School catchment area by realigning the rural areas around Dalmahoy with Balerno High School. This would also mean that primary pupils in the Dalmahoy area would be realigned from Currie Primary School to Dean Park Primary School.
- 3.4 **The existing and proposed primary and secondary catchment area boundaries are shown in Appendices 1, 2, 3 and 4. A list of the addresses affected by these proposals is available in Appendix 6.**
- 3.5 If approved, the proposed catchment area changes would take effect from November 2019 to capture the P1 and S1 registration process for August 2020. The proposed catchment changes would apply to new P1 and S1 pupils and any new registrations from people moving into the area. There would be no mandatory transfer of pupils already attending another school.

Dean Park and Balerno Extension Area

- 3.6 Under these proposals Dean Park Primary School and Balerno High School's catchment areas would be extended to the east and north. It would affect the existing properties in the Dalmahoy, Cherry Tree and Newmills areas, including the new housing development at Newmills. In the 2017/18 academic year there were 82 primary pupils and 75 secondary pupils residing in the proposed Dean Park and Balerno extension area. The schools attended by pupils residing in this area in the 2017/18 session are shown in tables 3 and 4 (below). These tables also show the average percentage of pupils from the Dean Park extension area attending each school over a 5-year period.

Table 3: Primary school attended by pupils residing in proposed Dean Park and Balerno catchment extension area

Primary School Attended	2017/18		Five-year average
	Number of Pupils	% of Pupils	% of Pupils
Currie PS	59	72%	58%
Dean Park PS	20	24%	33%
Other	3	4%	9%
Total	82	100%	100%

Table 4: Secondary school attended by pupils residing in proposed Dean Park and Balerno extension area

Secondary School Attended	2017/18		Five-year average
	Number of Pupils	% of Pupils	% of Pupils
Currie HS	41	54%	53%
Balerno HS	32	43%	45%
Other	2	3%	2%
Total	75	100%	100%

Nether Currie Extension Area

- 3.7 Under these proposals Nether Currie Primary School's catchment area would extend south and affect existing properties on Lanark Road West and the new housing development at Kinleith Mills which is substantially complete.
- 3.8 There would be no change in secondary catchment boundaries resulting from the Nether Currie extension area proposal.
- 3.9 In the 2017/18 academic year there were 22 pupils residing in the proposed Nether Currie extension area. The primary schools attended by pupils residing in this area in the 2017/18 session are shown in Table 5 and 4 (below). These tables also show the average percentage of pupils from the Nether Currie extension area attending each school over a 5-year period.

Table 5: Primary school attended by pupils residing in proposed Nether Currie extension area

Primary School Attended	2017/18		Five year average
	Number of Pupils	% of Pupils	% of Pupils
Currie PS	9	41%	34%
Nether Currie PS	7	32%	33%
Other	6	27%	33%
Total	22	100%	100%

4. Rationale for Change

Summary

- Currie Primary School projected to require 22 classes by 2024.
- Nether Currie Primary School has capacity to support additional demand.
- Currently both Currie Primary School and Dean Park Primary School would need new accommodation due to new housing development.
- Proposals would mean new accommodation only required at Dean Park Primary School.
- Proposal would align school catchment boundaries with Community Council boundaries.

Currie Primary School

- 4.1 Currie Primary School's roll has been increasing since 2010 and, following the completion of a 4 classroom extension in August 2018, the school's capacity has increased to 19 classes (546 pupils). Currie Primary School also has 2 GP classes and smaller activity spaces, a 60/60 nursery, gym hall and assembly/dining hall with a stage. The total site, including a playing field that has two seven aside pitches, is 1.94 hectares (excluding the playgroup site and nursery site).

- 4.2 The P1 intake in August 2018 was 83 pupils. Current projections suggest the P1 intake will rise to 97 pupils by 2024 and the school will require 22 classes to support the school roll.
- 4.3 Reducing the catchment area will reduce the school's catchment population and alleviate long term accommodation pressure at the school. Under the proposed catchment changes, catchment registrations for August 2018 would have been 68 pupils.
- 4.4 If the proposed catchment changes are approved, projections suggest the school roll will remain stable at 18 classes. Table 6 (below) shows the existing projected roll for Currie Primary School and the projected roll should the proposals set out in this document be approved. It illustrates that, even if the catchment changes are implemented, high P1 intakes in 2018 and 2019 will continue to push rolls up and that the school roll would only begin to fall after 2024. Analysis of the projected peak (552 pupils) suggests that this can be accommodated within the available classroom space.

Table 6: Currie Primary School projected school roll as existing and following proposed catchment changes

Currie Primary School	2018	2019	2020	2021	2022	2023	2024	2025	2026	2027
Projected Roll 12 December 2017	470	508	538	572	593	618	633	656	661	669
Projected Roll After proposed catchment changes	470	508	534	542	544	552	552	546	531	517

- 4.5 Options to reduce Currie Primary School's catchment area have considered local geographical factors, home to school travel, catchment demand, capacity at receiving schools, impact on secondary catchment boundaries and, where appropriate, the potential of receiving schools to support additional classroom accommodation. The financial implications of the proposal have also been considered and are set out in Section 6 of this paper.
- 4.6 Realigning the Currie and Dean Park Primary School catchment area boundary to only include new housing development at the Newmills housing site has been considered and discounted. This is because it would not address accommodation pressure at Currie Primary School.
- 4.7 Increasing Nether Currie Primary School's catchment area to the west has also been discounted because projections show any further increase may create accommodation pressure at Nether Currie Primary School in future years as it's roll is projected to grow in the longer term.

Nether Currie Primary School

- 4.8 Nether Currie Primary School is a single stream with capacity for 7 class (210 pupils). The school has one General Purpose class, a dining/assembly hall, stage and gym. It does not have a nursery class at present but it is the proposed site for a new nursery

building which would be completed prior to August 2020. The total site, including a playing field that can fit one seven aside football pitch, is 1.2 hectares.

- 4.9 The school roll in 2017/18 was 156 pupils. The school roll has experienced little change over the past 10 years and on average, occupies 75% of its available capacity. Pupils from Nether Currie Primary School’s catchment area represent 55% of the school roll. Accordingly, there is scope for Nether Currie Primary School to accommodate increased catchment numbers.
- 4.10 The projections in Table 7 (below) suggest that Nether Currie Primary School can accommodate future catchment pupils from the proposed extension area without requiring additional accommodation.

Table 7: Nether Currie Primary School projected school roll as existing and following proposed catchment changes

Nether Currie Primary School	2018	2019	2020	2021	2022	2023	2024	2025	2026	2027
Projected Roll 12 December 2017	153	163	167	163	168	169	170	171	171	172
Projected Roll With catchment change	153	163	172	168	172	172	172	172	172	181

Table 7 shows that the catchment changes proposed make little difference to Nether Currie Primary School’s role in the period to 2027. This is because a high proportion of Nether Currie Primary School’s roll and P1 intake is made up of non-catchment pupils. Accordingly, the pupils in the area of Currie Primary School’s catchment that it is proposed are realigned with Nether Currie Primary School would fill spaces that would otherwise be filled by non-catchment pupils.

- 4.11 In preparing these proposals, consideration has been given to increasing the area of Currie Primary School’s catchment that is realigned with Nether Currie Primary School. However, this is likely to lead to pressure to expand Nether Currie Primary beyond its available capacity. Accordingly, extending the catchment area to incorporate a larger portion of Currie Primary School’s catchment area is not proposed at this time.

Dean Park Primary School

- 4.12 Dean Park Primary School has capacity for 17 classes (476 pupils). The school includes two classes in a temporary unit that has been on site since 2000 and was originally used as a nursery class. It has an assembly/dining hall and gym hall. The nursery is now located off site in the Annex, located next to the local centre. The total site, including a playing field that can fit two seven aside football pitches, is 1.98 hectares (excluding the nursery site). The school’s working capacity is 476.
- 4.13 In the school site is a former NHS clinic that the school uses as a thrift shop and General Purpose classes.
- 4.14 The school roll has risen slightly since 2008. However, the P1 intake in August 2018 was 49 pupils, a fall on previous years, which has reduced the schools class

organisation from 17 classes in 2017/18 to 16 classes in 2018/19. The estimated school roll in August 2018 is 463.

4.15 The catchment population has remained relatively even since 2014. Pupils from Dean Park Primary School’s catchment area represent 88% of the school roll. The projections in Table 8 (below) suggest that if the proposed catchment changes were to be approved, Dean Park Primary School’s roll would increase to 19 classes by 2020 with a working capacity of 546 and 21 classes by 2025 with a working capacity of 630.

Table 8: Dean Park Primary School projected school roll as existing and following proposed catchment changes

Dean Park Primary School	2018	2019	2020	2021	2022	2023	2024	2025	2026	2027
Projected Roll 12 December 2017	455	468	463	455	459	449	449	463	450	456
Projected Roll With catchment change	455	468	494	504	524	526	539	566	572	583

4.16 The development of housing at Ravelrig Road already falls within Dean Park Primary School’s catchment area. It is projected that this will increase demand for places at Dean Park Primary School and, in the long-term, require the extension of the school building by up to two classes. Provision for this is made in the Local Development Plan’s supporting Education Infrastructure Appraisal and Action Programme and section 75 contributions have been sought from developers to provide the necessary funding.

4.17 The catchment change proposals set out in this paper would increase the requirement for the delivery of additional classroom space at Dean Park Primary School from the two classrooms already identified to five classrooms. Should the proposals in this paper be approved, work to identify and develop an appropriate accommodation solution would begin at Dean Park Primary School with a working group consisting of school management, parent representatives and Council officers.

4.18 While the number of classrooms required at Dean Park Primary School would increase under the proposals in this paper, the changes would negate the requirement for additional classroom space at Currie Primary School. Accordingly, rather than expanding provision at two primary schools as would currently be the case; the proposals in this paper limit further expansion to a single primary school.

5. Secondary Schools

Summary

5.1 The realignment of the primary school catchment area boundaries affects the secondary school catchment area boundaries.

- 5.2 The roll projections in Table 2 (see page 3) suggest that Balerno HS will exceed its existing capacity in 2021 while Currie HS will not exceed its capacity until 2027.
- 5.3 Under the proposals in this paper, projections suggest that Currie HS would no longer breach its capacity. However, an accommodation solution would be required at Balerno High School.
- 5.4 At its meeting on 21 June 2018, the Education, Children and Families Committee approved the progression of Option 1 which included expanding both Currie HS and Balerno HS to capacities of 1,000 pupils. Projected demand for both schools can be accommodated within this capacity and provide opportunity for some movement of pupils between the schools.

Currie High School

- 5.5 Currie High School has a notional capacity of 900 pupils. Its roll in 2018/19 is 716. Roll and catchment analysis over the past 10 years shows the school roll and catchment population peaked in 2009 and has recorded year on year falls until 2017 when a marginal year on year increase of 2% to the school roll and 1% to the catchment population occurred. This is consistent with increases in catchment births in 2005, P1 intake in 2010 and S1 intake in 2017.
- 5.6 Over the past five years the school roll has, on average, been 75% of its notional capacity. Pupils from Currie High School's catchment area represent 78% of the school roll.
- 5.7 If the proposed catchment changes set out in this paper are approved, projections show the school roll will remain within the school's notional capacity.

Table 9: Projected Secondary School Roll as existing and following proposed catchment changes

Currie High School	2018	2019	2020	2021	2022	2023	2024	2025	2026	2027
Projected Roll 12 December 2017	725	740	754	784	822	831	847	863	894	920
Projected Roll With catchment change	725	740	753	782	817	823	835	847	880	896

Balerno High School

- 5.8 Balerno High School has a notional capacity of 850 pupils. Its roll in 2018/19 is 731. The school roll is, based on a five year average, 84% of its notional capacity. Pupils from Balerno High School's catchment area represent 52% of the school roll. Pupils from areas not in a designated City of Edinburgh Council catchment area represent 34% of the school roll.
- 5.9 If the proposed catchment changes are approved, projections show the school's notional capacity will be breached in 2021 and would not bring forward the requirement to address accommodation pressure at Balerno High School.

Table 10: Projected Secondary School Roll as existing and following proposed catchment changes

Balerno High School	2018	2019	2020	2021	2022	2023	2024	2025	2026	2027
Projected Roll 12 December 2017	754	788	836	871	892	912	915	915	915	915
Projected Roll With catchment change	754	788	836	871	892	912	915	915	935	935

5.10 Table 10 shows that the catchment changes proposed would make little difference to Balerno High School’s roll in the period to 2027. This is because a high proportion (29%) of Balerno High School’s roll is made up of non-catchment pupils. Accordingly, the pupils in the area of Currie High School’s catchment that it is proposed are realigned with Balerno High School would fill spaces that would otherwise be filled by non-catchment pupils.

5.11 The catchment changes proposed would geographically link Ratho Primary School with the rest of the Balerno High School catchment area by realigning the rural areas around Dalmahoy with Balerno High School. A small extension would be required to Balerno High School which would be considered through the rising rolls programme.

Community Council Boundaries

5.12 Under these proposals the catchment boundaries of Currie and Balerno High School would be brought in line with the boundaries of Currie Community Council and Balerno Community Council. The Community Council boundaries are shown in the map of existing secondary school catchment boundaries (Appendix 3) and the map of the proposed secondary school catchment boundaries (Appendix 4).

6. Educational Benefits

Primary School

6.1 Each school will have the capacity for a pupil roll which serves their local community. Effective teaching staffing levels will be maintained, led by a range of promoted teaching staff, consistent with that roll. Effective class organisation models will be in place in each school with children able to maximise engagement in teaching and learning. There would also be the potential for the increase in collaboration and wider opportunities for achievement.

6.2 As there are no changes proposed or planned to the general use of the buildings or facilities at any of the potentially affected schools there would be no detriment to other users of the schools wither current or future.

Education Scotland Inspection Reports

6.3 Nether Currie Primary School was last inspected by Education Scotland in 2015 while Dean Park Primary and Currie Primary were last inspected in 2009 and 2010

respectively. Accordingly, given the age of the available data, a comparison of this data is not considered to be relevant or useful for the purposes of this catchment review. However, through focused self-evaluation, each school has allocated the following quality values to reflect their capacity for continuous improvement:

Table 11: Primary School Self-Evaluations

Evaluation Criteria	Nether Currie	Dean Park	Currie
Date of Standards and Quality report	June 18	June 18	June 18
Leadership of change	Satisfactory	Very Good	Good
Learning, teaching and assessment	Good	Very Good	Good
Ensuring well-being, equity and inclusion	Good	Very Good	Good
Raising attainment and achievement	Good	Very Good	Good

Educational Attainment and Achievement

- 6.4 Within Curriculum for Excellence, there is a range of information provided which is used to measure attainment and achievement for primary schools. The City of Edinburgh uses this range of information to report on attainment and improvements in performance for its primary schools and pupils. These measurements include evaluations using Quality Indicators, standardised assessments, Curriculum for Excellence levels and wider achievement.
- 6.5 Tables 12a, 12b and 12c (below) show that the current Curriculum for Excellence levels at Currie, Dean Park and Nether Currie Primary Schools reflect that most children achieve national expectation in language and maths. In the main, the attainment across these measures at P1, P4 and P7 compare favourably with the city of Edinburgh average.

Table 12a: CfE Levels - P1 Achieved Maths and Achieved Language								
	P1 Achieved Maths				P1 Achieved Language			
Primary School	2014/15	2015/16	2016/17	2017/18	2014/15	2015/16	2016/17	2017/18
Currie	66%	91%	100%	85%	80%	91%	94%	82%
Dean Park	91%	88%	85%	92%	89%	88%	90%	85%
Nether Currie	71%	90%	96%	100%	75%	90%	96%	100%
City Average	73%	87%	87%	86%	68%	82%	83%	84%

Table 12b: CfE Levels - P4 Achieved Maths and Achieved Language								
	P4 Achieved Maths				P4 Achieved Language			
Primary School	2014/15	2015/16	2016/17	2017/18	2014/15	2015/16	2016/17	2017/18
Currie	73%	82%	85%	75%	73%	82%	78%	92%
Dean Park	79%	66%	80%	86%	88%	69%	85%	88%
Nether Currie	85%	94%	95%	89%	93%	94%	100%	89%
City Average	64%	75%	79%	81%	64%	76%	80%	82%

Table 12c: CfE Levels - P7 Achieved Maths and Achieved Language								
	P7 Achieved Maths				P7 Achieved Language			
Primary School	2014/15	2015/16	2016/17	2017/18	2014/15	2015/16	2016/17	2017/18
Currie	62%	81%	82%	78%	68%	81%	90%	80%
Dean Park	70%	68%	85%	87%	68%	74%	88%	86%
Nether Currie	67%	88%	90%	96%	67%	100%	93%	92%
City Average	60%	73%	76%	78%	61%	74%	81%	81%

6.6 The data in tables 12a to 12c is derived from standardised assessments in each school at P1, P4 and P7 using nationally applied criteria including Education Scotland benchmarks, and teacher professional judgement based on evidence of children's learning from a variety of different sources. This allows for schools to measure improvements in attainment performance over time. National standards for pupil progress in literacy and numeracy are moderated in each school.

Monitoring

6.7 The Quality Improvement Education Officer for the primary schools affected by this statutory consultation will continue to monitor and evaluate attainment and achievement and the overall impact of any catchment changes implemented ensuring any necessary actions are included in school improvement plans on an on-going basis.

Secondary

Local Educational Context

6.8 All City of Edinburgh schools are subject to quality assurance procedures in line with local and national policy. Evidence from school inspections, LA reviews and parent and pupil surveys show Currie and Balerno high schools currently meet the needs of their learners and communities well.

6.9 The vision and values of all schools are underpinned by a commitment to excellence and equity and the principles of inclusion and Getting It Right For Every Child. Both Currie and Balerno high schools adhere to these principles.

- 6.10 Continuing to raise attainment is both a national and local priority – all Edinburgh schools are ambitious for their young people. Key principles for success, which apply to all schools, include thorough curriculum rationale and development that is based on understanding of the local context and community of the school, workforce intelligence and partnerships, thus ensuring learning pathways are aspirational, flexible and well-designed to meet the needs of all learners. All south-west Edinburgh secondary schools are working with partners and additional agencies to deliver the curriculum.
- 6.11 All Edinburgh secondary schools offer a considerable range of wider achievement opportunities, based on the skills and capacities of their staff and of parents, community and other partners they work with to provide these. They are aware of the need to ensure equity of access to such opportunities and to enable pupils to gain accreditation whenever possible.

Education Scotland Inspection Reports

- 6.12 There is capacity in each secondary school to cater for the proposed catchment changes. Both secondary schools are performing well at a broadly similar level.

Evaluation Criteria (How Good Is Our School 3)	Balerno High School December 2011	Currie High School March 2016
Improvements in performance	very good	good
Learners' experiences	good	very good
Meeting learners' needs	good	good
The curriculum	good	good
Improvement through self-evaluation	satisfactory	very good

- 6.13 School inspections were undertaken in 2011 and 2016 respectively. Both received positive evaluations under the “How Good Is Our School? 3” framework. Given the time since the Balerno inspection, it is considered that this comparator has limited value.
- 6.14 Subsequent validated self-evaluation has taken place under the newer “How Good Is Our School? 4” framework as follows:

Evaluation Criteria/ Quality Indicator	Balerno High School June 2018	Currie High School June 2018
Leadership of change 1.3	good	very good
Learning, teaching and assessment 2.3	good	very good
Ensuring wellbeing, equality and inclusion 3.1	very good	good
Raising attainment and achievement (June 2017) 3.2	good	good

Educational Attainment and Achievement

6.15 Within Curriculum for Excellence, there is no one national measure of attainment and achievement for secondary schools. There is a basket of measures within the National Improvement Framework upon which we can begin to measure progress towards narrowing the poverty-related gap. The City of Edinburgh uses a range of information to report on attainment and improvements in performance. These measures include “How Good Is Our School? 4” (HGIOS?4) Quality Indicators, standardised assessment data (over time until June 2017), and Curriculum for Excellence levels (based on teacher professional judgement) gathered in S3 and benchmarks in attendance, inclusion and participation.

Numeracy % achieved level 3+	15-16	16-17	17-18
Balerno	89.6	84.8	89.8
Currie	93.8	95.7	100
City	82.2	90.8	92.0
Reading % achieved level 3+			
Balerno	91.8	84.5	96.9
Currie	86.8	93.6	99.1
City	82.9	88.0	91.0

6.16 For the purposes on this report, data has been provided for Balerno and Currie high schools. Firstly, a percentage of young people in S3 achieved 3rd level or better in Numeracy and Reading. It should be noted both schools achieve above the city average for reading.

6.17 Secondly, the mean standardised assessment scores of young people in S3 for Numeracy and Literacy in 2016-17. Prior to this, data was collected in S2, therefore trends over time are not available. (NB: In 2017-18, available data is from the new Scottish National Standardised Assessment administered in S3, which does not in year one give standardised scores on a comparable scale.) In the main, this data set shows attainment at above city average for numeracy and broadly in line with city average for literacy.

Mean Standardised Assessment Score Numeracy	2016-17
Balerno	105.6
Currie	102.0
City	93.2
Literacy	
Balerno	98.9
Currie	99.4
City	99.7

6.18 Thirdly, attendance data, which shows that both schools are well above the city average:

% attendance	2015-16	2016-17
--------------	---------	---------

Balerno	92.7	93.9
Currie	94.1	94.8
City	92.9	92.3

6.19 Senior Phase data reflects high attainment in both Balerno and Currie high schools. If leavers' data (all S4, S5, S6 learners at their exit point) is compared, we see that both schools perform well above city average on these measures.

% achieved	Level 4 Literacy and Numeracy 2015-16	Level 4 Literacy and Numeracy 2016-17	Level 5 Literacy and Numeracy 2015-16	Level 5 Literacy and Numeracy 2016-17
Balerno	95	90	72	68
Currie	91	91	65	77
City	88	89	62	65

Monitoring

6.20 The Quality Improvement Education Officer for the secondary schools affected by the statutory consultation will continue to monitor and evaluate attainment and achievement and the overall impact of any catchment changes implemented.

7. Financial Considerations

Capital Costs

- 7.1 The capital costs arising from approval of the proposals in this paper all stem from the additional infrastructure required to support the catchment changes proposed. These are the delivery of up to five new classrooms at Dean Park Primary School and any works required to allow expansion of Balerno High School to a capacity of 1,000 pupils.
- 7.2 It is estimated that the cost of five new classrooms at Dean Park Primary School would be £1.492m although how additional accommodation is delivered would be subject to review of existing facilities at the school.
- 7.3 If the proposals in this paper do not gain approval, the cost of providing the necessary four classrooms at Currie Primary School and two classrooms at Dean Park Primary School is estimated to be £1.978m.
- 7.4 No reference cost data is available on the basis of which it would be possible to estimate the cost of delivering an extension of the capacity at Balerno High School. This will be highly dependent on the solution identified and the extent to which additional or refurbishment of existing circulation and support space is required.

Capital Funding

- 7.5 Through its planning powers, the Council can secure financial contributions from developers towards the delivery of the infrastructure actions identified in the LDP's Action Programme.

- 7.6 Five new classrooms are identified in the LDP's Action Programme to support housing growth in Currie Primary School and Dean Park Primary School's catchment areas.
- 7.7 Additional classrooms required to support growth in the existing urban area will have to be secured through the Council's budget process. Accordingly additional classrooms required at Currie Primary School will have to be funded through the Rising Roll programme and additional classrooms at Dean Park Primary School will be funded through the LDP's Action Programme.
- 7.8 The financial implications on future capital and revenue budgets of the LDP's Action Programme were reported to the Finance and Recourses Committee on 19 January 2017. This report identifies the risks associated with securing developer's contributions for LDP education infrastructure and requests the initial budgets required to deliver additional classrooms are established in the Capital Investment Programme through the Council's budget setting process.

Revenue Costs

7.9 To be added

8 Consultation Process

- 8.1 This section expands upon the public consultation process relating to the proposal.
- 8.2 On 21 June 2018 the Education, Children and Families Committee approved a statutory consultation be undertaken proposing changes to the catchment boundaries between Currie Primary School, Dean Park Primary School and Nether Currie Primary School and the associated changes required to secondary school catchment boundaries.
- 8.3 On 9 October 2018 the Education, Children and Families Committee delegated authority to the Director of Communities and Families to develop a detailed consultation paper on the proposed catchment boundary changes.
- 8.4 The statutory consultation requirements for any proposal to establish, terminate or otherwise alter the catchment area of a school are set out in the Schools (Consultation) (Scotland) Act 2010, as amended by the Children and Young People (Scotland) Act 2014.
- 8.5 This requires the Council to undertake statutory consultations with individuals or groups affected by the proposals. Statutory consultees are as follows:
- the Parent Council of any affected school;
 - the parents of the pupils at any affected school;
 - the parents of any children expected to attend any affected school within two years of the date of publication of the proposal paper;
 - the pupils at any affected school (in so far as the education authority considers them to be of a suitable age and maturity);

- the staff (teaching and other) at any affected school;
- any trade union which appears to the education authority to be representative of the staff (teaching and other) at any affected school;
- the community councils (if any);
- the Roman Catholic Church;
- any other education authority that the education authority considers relevant;
- any other users of any affected school that the education authority considers relevant.

8.6 The extent of the consultation with pupils at the affected schools and the appropriate means of engaging with those pupils will be discussed in detail with each school's management team.

8.7 The consultation period will run for a six week period from Tuesday 23 October 2018 to Monday 3 December 2018 and the paper will be made available electronically and in paper format. Copies will also be available for inspection at the Council Offices at Waverley Court, at Currie Library, Balerno Library and at the schools affected by the proposals.

8.8 Two public meetings will be held in respect of the proposals at the venue listed below. The meetings will give interested parties a formal opportunity to express their views. Representatives of the Council will be present at the meetings to outline the proposals, assist discussions and answer questions. Free childcare and/or translation services can be provided at each public meeting if requests for these services are made to (0131) 469 3969 no later than **DATE**. A record of each public meeting will be taken by the Council.

Venue	Date	Time
Currie High School	tbc	18:30 – 20:30
Balerno High School	tbc	18:30 – 20:30

8.9 All comments received will be recorded and represented in the final report, along with the Council's response to those comments. Individual responses will not be provided to submissions made during the consultation. However, if common themes emerge from the submissions, the Council will prepare a Frequently Asked Questions paper and publish it on the Council website during the consultation.

8.10 The Council website will contain information on the consultation and this will be updated as necessary www.edinburgh.gov.uk

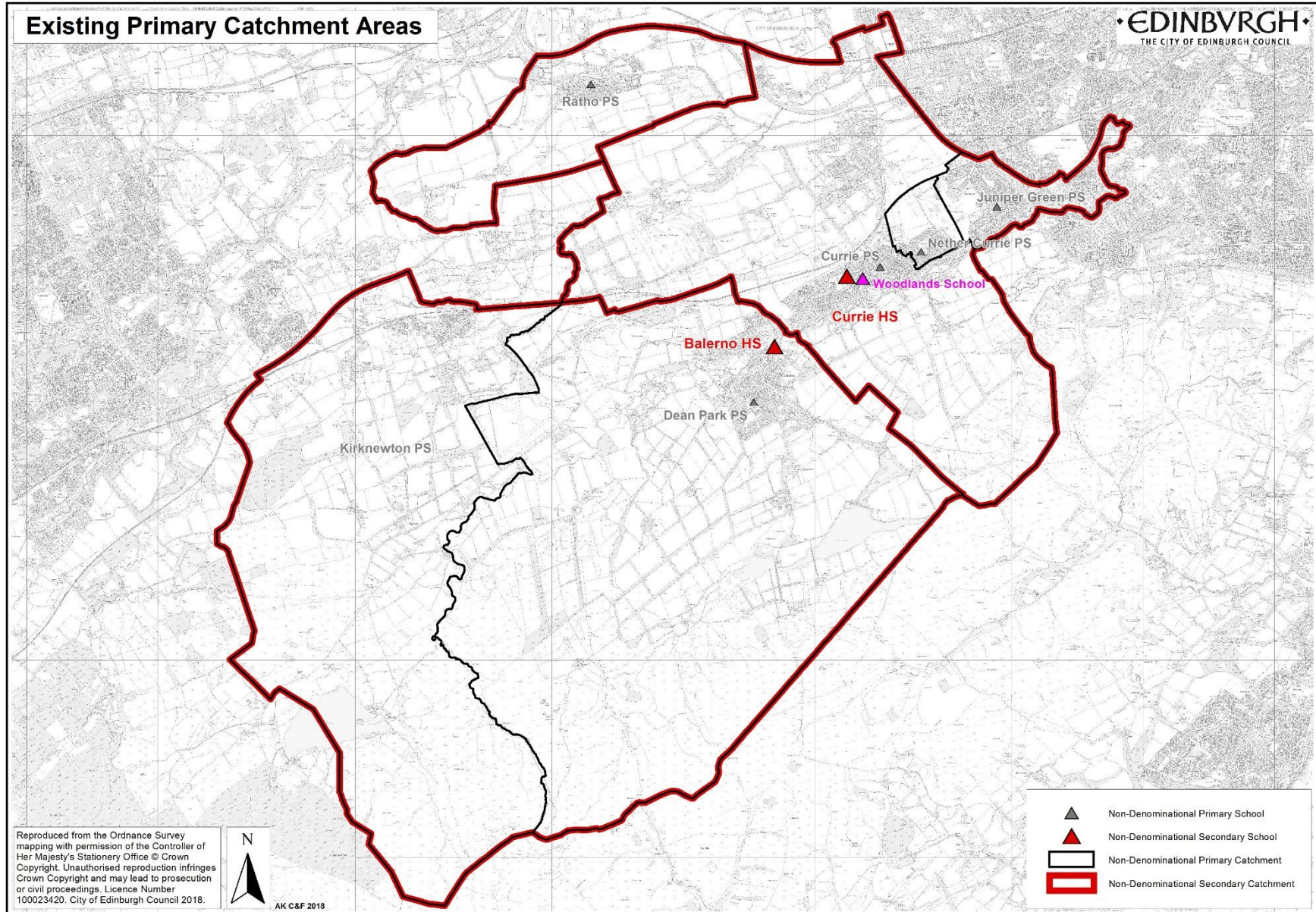
8.11 During the consultation period, any views on this proposal should be sent to in writing to the following address:

Alistair Gaw
 Executive Director of Communities and Families
 City of Edinburgh Council
 Council Headquarters
 Waverley Court
 Level 1:2

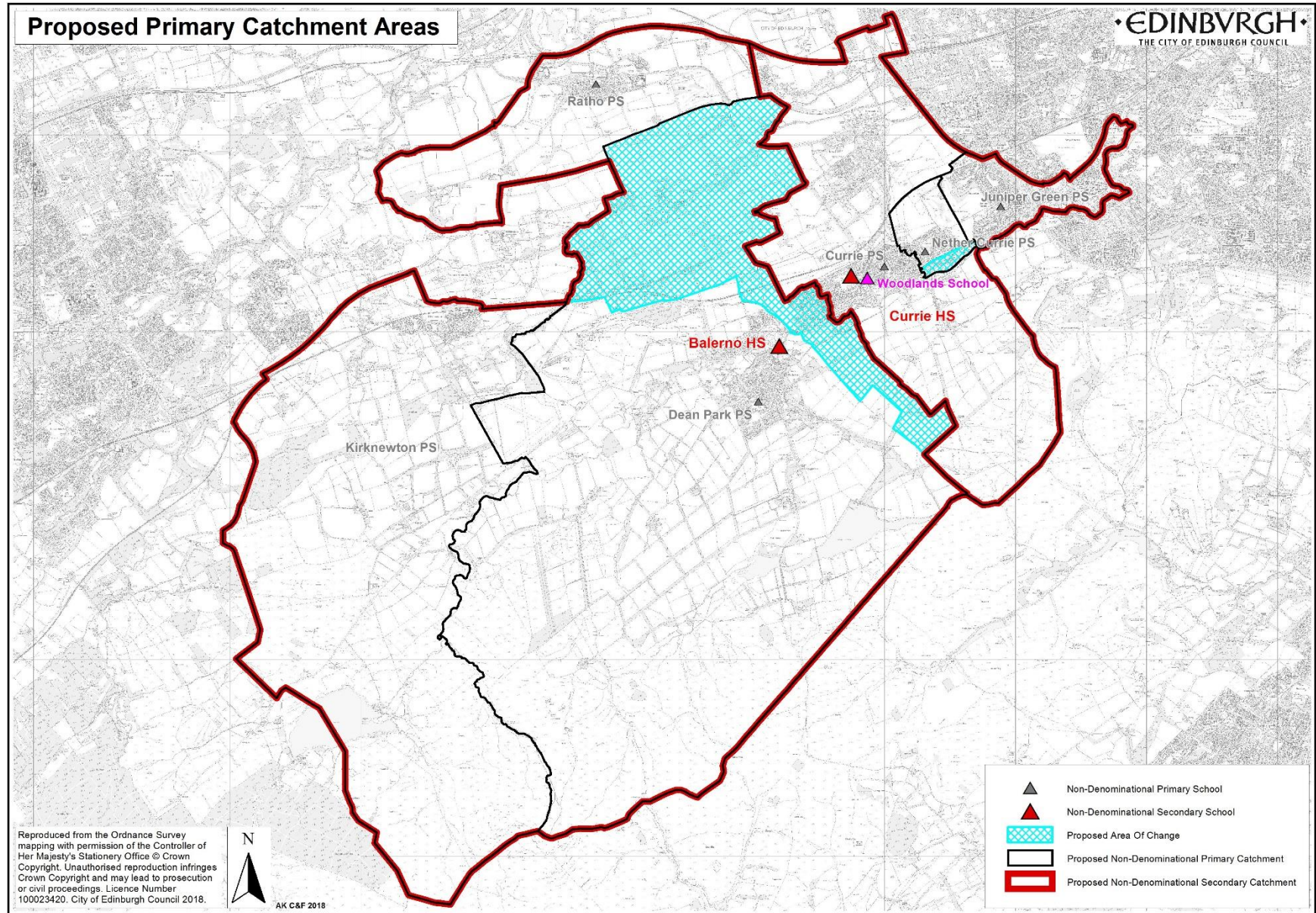
4 East Market Street
Edinburgh EH8 8BG

- 8.12 Respondents are encouraged to use the response questionnaire which has been produced and is provided in Appendix 6. The response questionnaire can also be completed online at www.edinburgh.gov.uk/. Responses can also be made by e-mail to the following address @edinburgh.gov.uk. All responses, whether by letter, e-mail or using the online questionnaire should be received by no later than close of business on 1 June 2018.
- 8.13 Once the public consultation phase finishes, details of the representations received will be issued to Education Scotland for their consideration of the educational effects of the proposals. Education Scotland will issue a report on their findings which will be included in the final Council report on the consultation.
- 8.14 Following the conclusion of the consultation period and after consideration of the representations received and the views of Education Scotland on the educational benefits of the proposal, a report on the Outcomes of the Consultation will be presented to the Council. The report will be made publicly available and notification will be given to those individuals or groups that have made representations during the consultation period. The report will include a summary of written representations received during the consultation period and representations made at the public meeting along with the Council response to representations made and also to any issues raised by Education Scotland.
- 8.15 It is anticipated that the Outcomes of the Consultation report, setting out recommendations, will be presented to a Meeting of the Council on Thursday 14 March 2019. It is expected that the report will be published no later than Thursday 21 February 2019 being the required three weeks in advance of it being considered by the Council.
- 8.16 If the catchment changes are approved by the Council it is proposed the changes would take immediate effect and the placing procedures for Primary 1 and Secondary 1 pupils for the start of the 2020/21 school session would be based on the revised catchment areas.

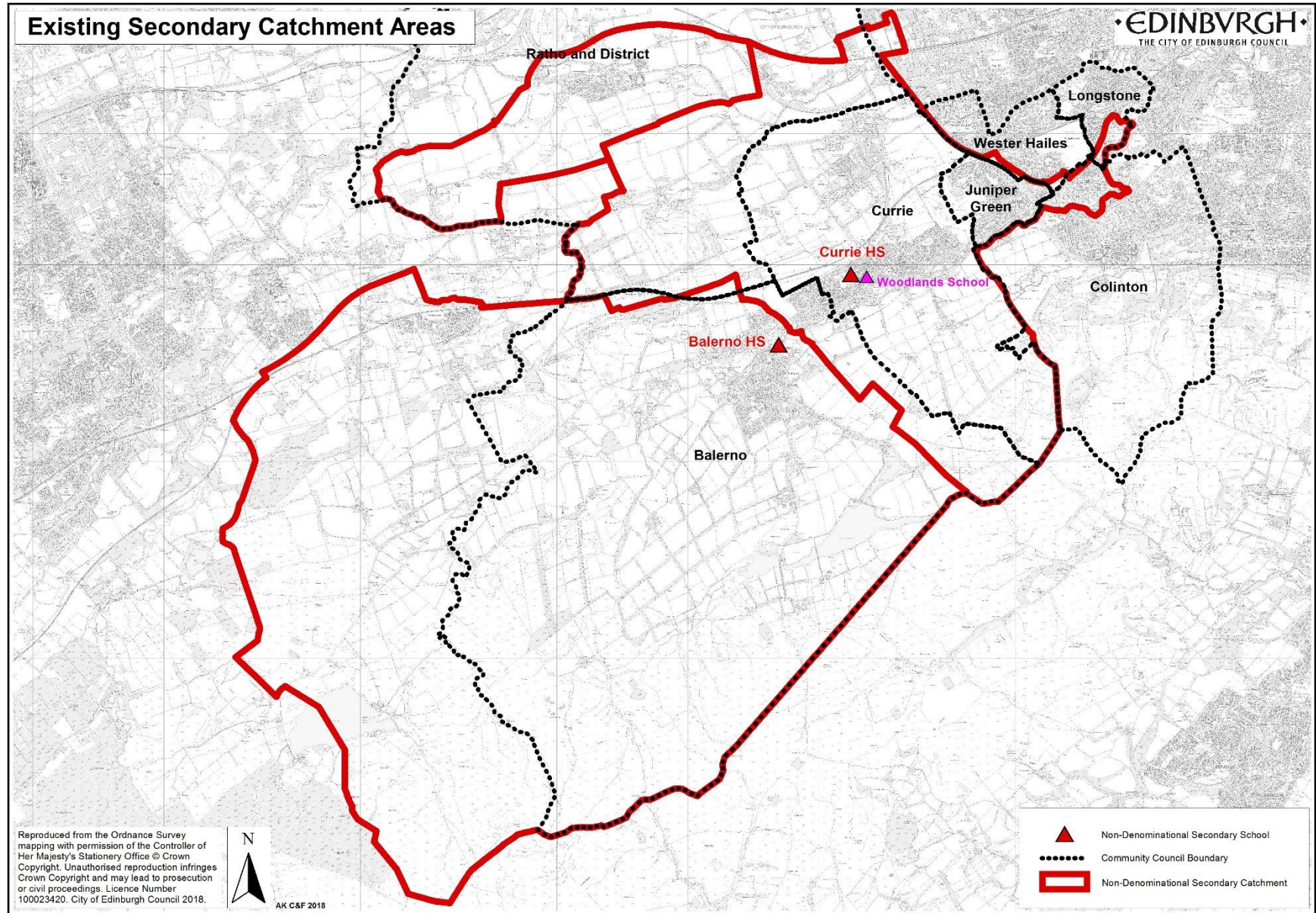
Appendix 1: Existing Primary School Catchment Areas



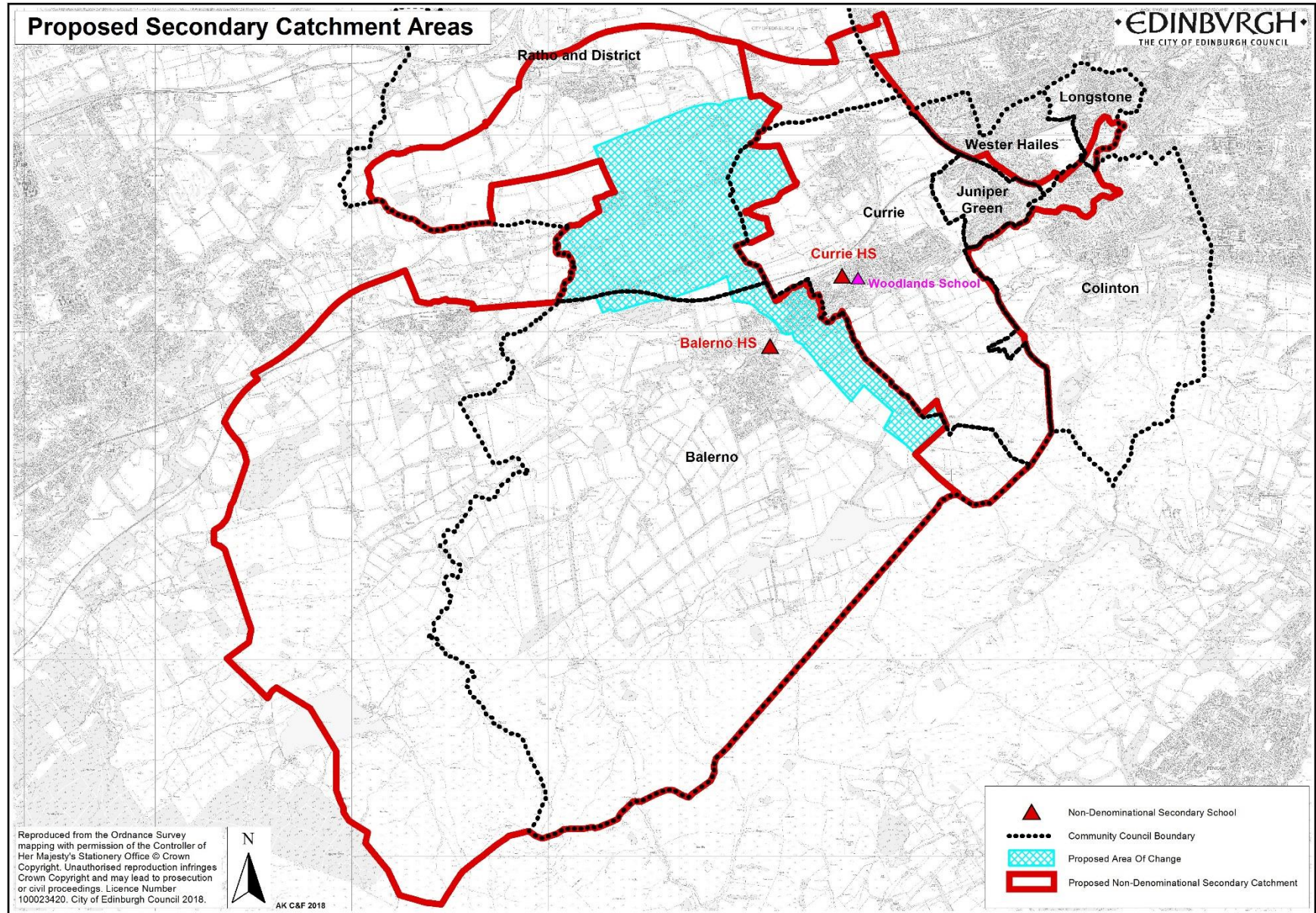
Appendix 2: Proposed Primary School Catchment Areas



Appendix 3: Existing Secondary School Catchment Areas



Appendix 4: Proposed Secondary School Catchment Areas



Appendix 5: List of affected addresses

Addresses moving from Currie Primary School to Dean Park Primary School

Street	House Numbers and Names
Addiston Farm Road	No.1,2,3,5, Kiershill, Brampton Lodge
Calder Road	No.4, Addistoun House, Addistoun Lodge, Bridge End Cottages, Burnwynd, Easter Hatton House, Entryhead, Hatton Mains, Knowehead Cottage, Old Hatton Mains, Old Hatton Mains Dalmahoy, Sawmills Cottages
Cherry Tree Avenue	No.1,2,3,4,5,6,7,8,9,10,11,12,13,14,15,16,17,18,19,20
Cherry Tree Crescent	No.1,1A,2,3,4,5,6,7,8,9,10,12,14,16,18,20,22,24,26,28
Cherry Tree Gardens	No.1,2,3,4,5,6,7,8,9,10,11,12,13,14,15,16,17,18,19,20,21,22,23,24,25,26,28,30,32, 34,36,38,40,42
Cherry Tree Grove	No.1,2,3,4,5,6
Cherry Tree Loan	No.1,2,3,4,5,6,7,8,9,10,11,12,13,14,15,16,17,19
Cherry Tree Park	No.1,2,3,4,5,6,7,8,9,10,11,12,13,14,15,16,17,18,19,20,21,22,23,24,25,26,27,28,29, 30,31,32,33,34,35,36,37,38,39
Cherry Tree View	No.1,2,3,4,5,6
Curriehill Castle Drive	No. 1, 2, 3, 4, 5, 6, 7, 8, 9, 10, 11, 12, 13, 14, 15, 16, 17, 18, 19, 20, 21, 22, 23, 24, 25, 26, 27, 28, 29, 30, 31, 32, 33, 34, 35, 36, 37, 38, 39, 40, 41, 42, 43, 44, 45, 46, 47, 48, 49, 50, 51, 52, 53, 54, 55, 56, 57, 58, 59, 60, 61, 62, 63, 64, 65, 66, 67, 68, 69, 71, 73, 75, 77, 79, 81, 83, 85, 87, 89, 91, 93, 95, 97, 99, 101, 103, 105, 107, 109, 111, 113, 115, 117, 119, 121, 123, 125, 127, 129, 131, 135, 137, 139, 141, 143, 145, 147, 149, 151, 153, 155, 157, 159, 161, 163, 165, 167, 169, 171, 173, 175, 177, 179, 181, 183, 185, 187, 189, 191, 193
Dalmahoy	No.1,1A,2,3,4,5A,5,6,7,8,9,10,11,15,16, The Elms
Gowanhill Farm Road	No.1B, Curriehill Crossing
Haggs Farm Road	No.17
Lanark Road West	No.414,416,418,420,422,424,426,428,430,432,434,436,438,440,442,444,446,456, 458,460,462,464,466,468,469,470,472,472B,478,480
Long Dalmahoy Road	No.1,3A,101,103, Long Dalmahoy, Haggs Farm, Despone, Tui Steading, Newhouse Livery, Haggs Cottages, Newhouse Farmhouse, Newhouse Cottages
Lymphoy	Lymphoy House, Lymphoy Stables, Lymphoy Cottage
Newmills Avenue	No.1,2,3,4,6,8
Newmills Crescent	No.1,2,3,4,5,6,7,8,9,10,11,12,13,14,16,17,18,23,25,27,29,31,32,33,34,35,36,37,38, 39,40,41,42,43,44,45,46,47,48,49,50,51
Newmills Grove	No.1,2,3,4,5,6,7,8,9,10,11,13,15
Newmills Road	No.1B,1,2,3,4,5,6,7,8,10,12,14,16,17,18,19,20,21,22,23,25,26,27,28,29,31
Somerville Road	No.39,41
Willow Tree Place	No.1,2,3,4,5,6,7,8,9,10,11,12,13,14,15

Addresses moving from Currie Primary School to Nether Currie Primary School

Street	House Numbers and Names
Blinkbonny Road	Brooklea
Bryce Road	No.57
Kinleith Mill Road	No.1,3,5,7,9,11,13,15,17,19,21,22,23,24,25,26,27,28,29,30,31,32,34,36,38,40
Lanark Road West	No. 1, 2, 2A, 3, 4, 5, 6, 7, 7A, 7B, 8, 9, 9A, 10, 11, 12, 13, 14, 16, 17, 19, 20, 22, 24, 26, 28, 30, 32, 33, 34, 36, 38, 40, 41, 42, 43, 44, 46, 47, 48, 50, 54, 56, 57, 58, 59, 60, 62, 66, 68, 70, 72, 74, 76, 78, 80, 82, 84, 86, 88, 90, 92, 93, 93A, 94, 96, 97, 98, 99, 101, 102, 104, 105, 106, 108, 110, 112
Provost Haugh	No.1,2,3,4,5,6,7,9,10,11,12,13,14,15,16,17,18,19,20,21,22,23
Tansy Street	No.1,2,3,4,5,6,7,8,9,10,11,12,13,14,15,16,17,18,19,20,21,22,23,24,25
Wintour Lane	No.1,2,3,4,5,6,7,8,9,10,11,12,13,14,15,16,17

Appendix 6: Response Questionnaire

Statutory Consultation on a Proposal to reduce the catchment areas of Currie Primary School and Currie High School and increase the catchment areas of Nether Currie Primary School, Dean Park Primary School and Balerno High School.

Introduction

It is proposed to change the catchment areas of Currie Primary School, Dean Park Primary School and Nether Currie Primary School. The proposed changes to the primary schools will have associated changes to secondary school catchment boundaries at Currie High School and Balerno High School.

You can read the background to the consultation in the report to the Council's Education, Children and Families Committee on 6 March 2018.

The full details of all the proposals are available in the statutory consultation paper which you should read before completing this questionnaire.

The statutory consultation paper is available online at (address to be added) and copies are available in the affected schools and local libraries.

Why are we consulting?

The Council has a legal obligation to carry out a statutory consultation under the Schools (Consultation) (Scotland) Act 2010 as amended by the Children and Young People (Scotland) Act 2014.

The proposals put forward will have implications for families and we want to hear the views of anyone affected by the proposals.

All comments made during the statutory consultation period will be recorded and represented in a final report anticipated to be considered by Council in September 2018.

This questionnaire should be completed and returned by no later than 17:00 on Friday 1 June 2018.

All personal information in the questionnaire is for internal use only and will not be made public however the responses to questions 6 and 7 may be reflected, either in whole or in part, in the report to Council but on an anonymised basis.

The questionnaire can be completed online at the following link (address to be added) or can be completed in the following pages and returned to the following address:

Alistair Gaw
Executive Director of Communities and Families
City of Edinburgh Council
Council Headquarters
Waverley Court
Level 1:2, 4 East Market Street
Edinburgh
EH8 8BG

Responses can also be made in writing to the address above or by e-mail to the following address (to be added)@edinburgh.gov.uk

Questionnaire

Question 1

What is your name?

Name

Question 2

What is your email address? (Optional)

Email

Question 3

What is your postcode?

Postcode

Question 4

What is your main interest in the consultation?

Please select (tick) all items that apply:

- Parent/Carer of school child
- Parent/Carer of school child with younger sibling/s
- Parent/Carer of pre-school child
- School Staff
- Pupil
- Local resident
- Local organisation
- Other

If you are answering on behalf of an organisation, or for other reasons, please explain below.

Question 5

Do you have a child or children in a primary school or nursery classes at the moment?

Please select (tick) only one item.

No

Yes

If yes please tell us the name(s) of their school or nursery classes.

Currie Primary School

Dean Park Primary School

Nether Currie Primary School

Balerno High School

Currie High School

Woodlands School

Currie Nursery Class

Dean Park Nursery Class

Other school (please specify below)

Other nursery (please specify below)

Please specify any other schools or nursery below

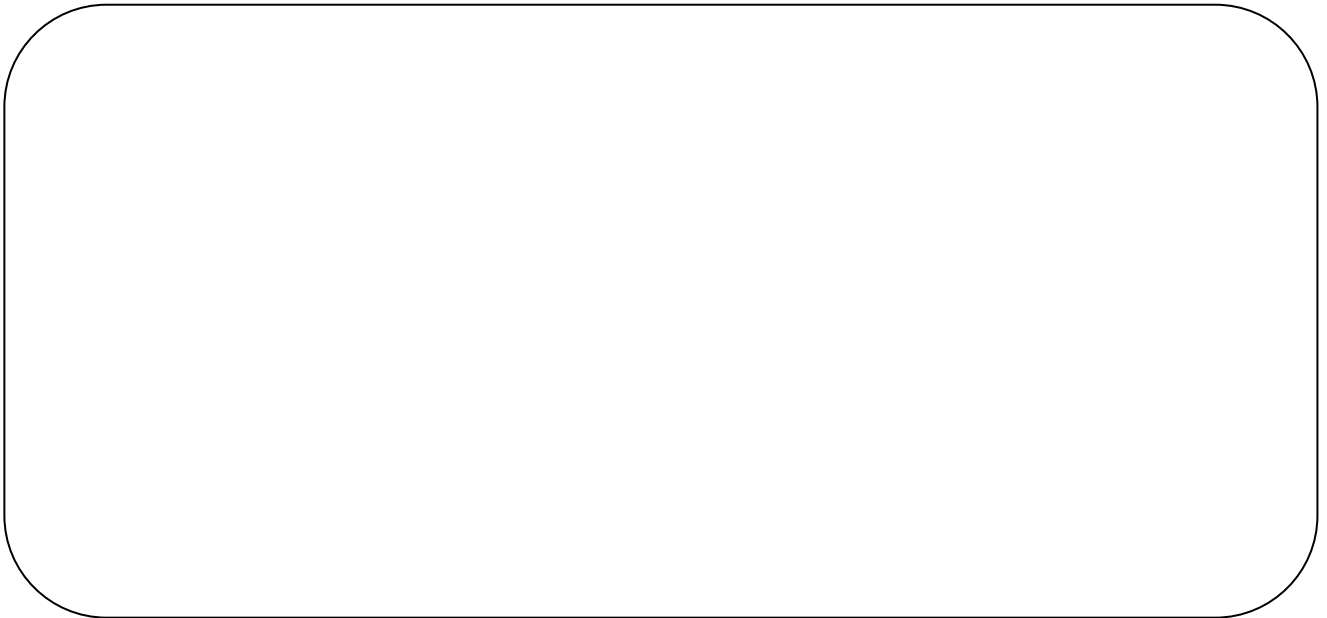
Question 6

Having considered the option as detailed in the statutory consultation paper, do you support it?
Please select (tick) only one item.

Yes

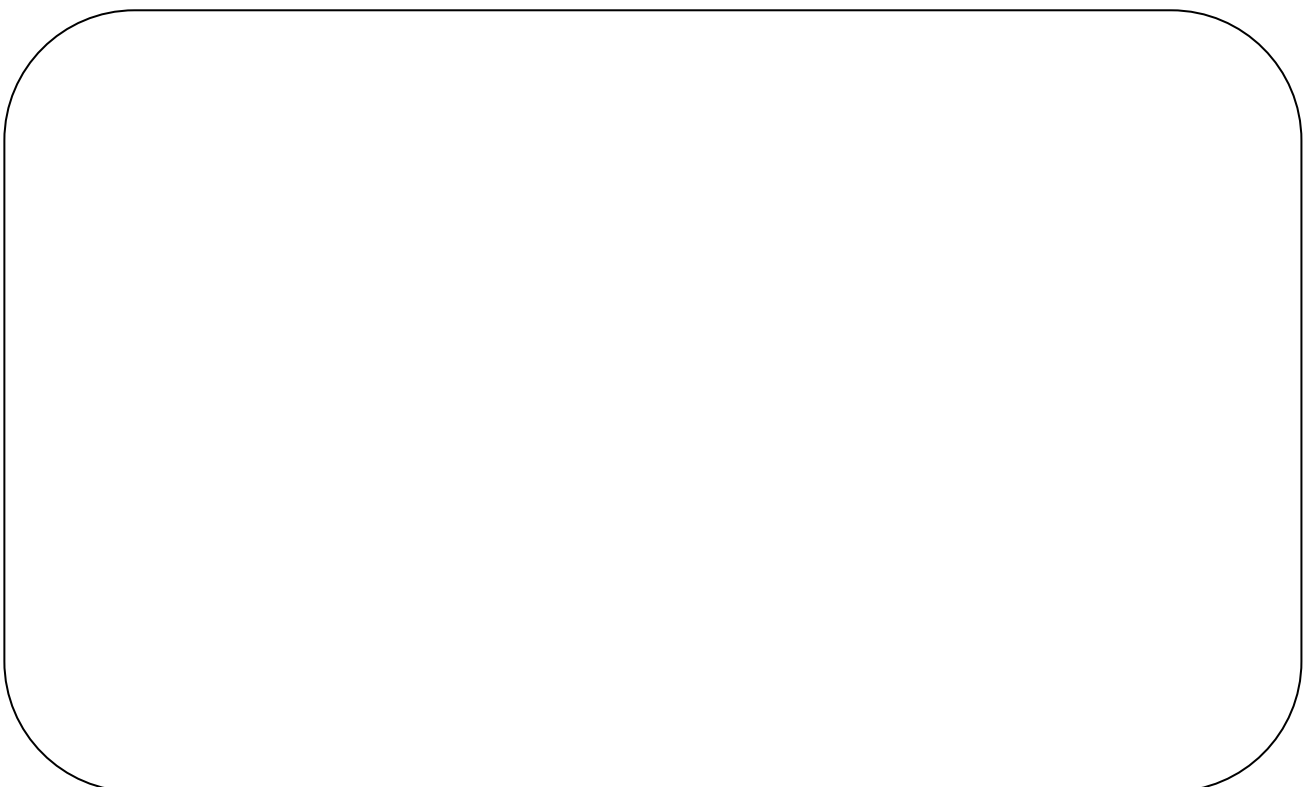
No

Please give reasons for your preferred option.



Question 7

Any other comments or suggestions?





HAPPY TO TRANSLATE

আনন্দের সঙ্গে অনুবাদ করব ترجمے کے لئے حاضر

بیسعدنا توفیر الترجمة MOŻEMY PRZETŁUMACZYĆ 很樂意翻譯

You can get this document on tape, in Braille, large print and various computer formats if you ask us. Please contact ITS on 0131 242 8181 and quote reference number 17-2417. ITS can also give information on community language translations. You can get more copies of this document by calling 0131 469 3969.